



# Multi-Level Power Changer



DOUBLE, TRIPLE AND QUAD STACKING MODELS AVAILABLE

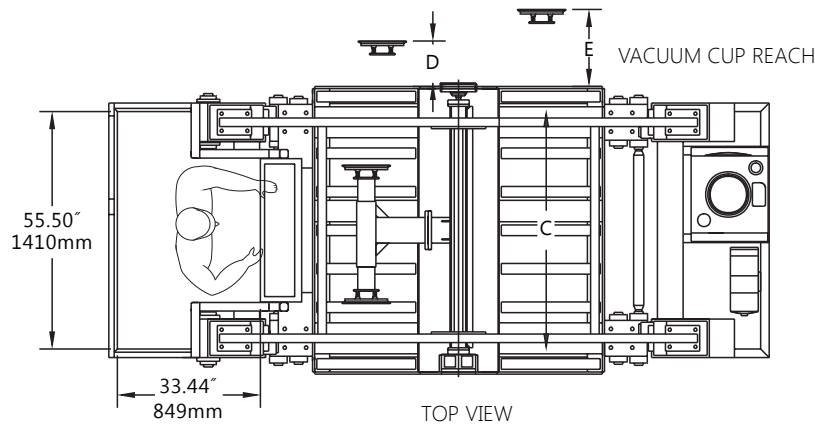
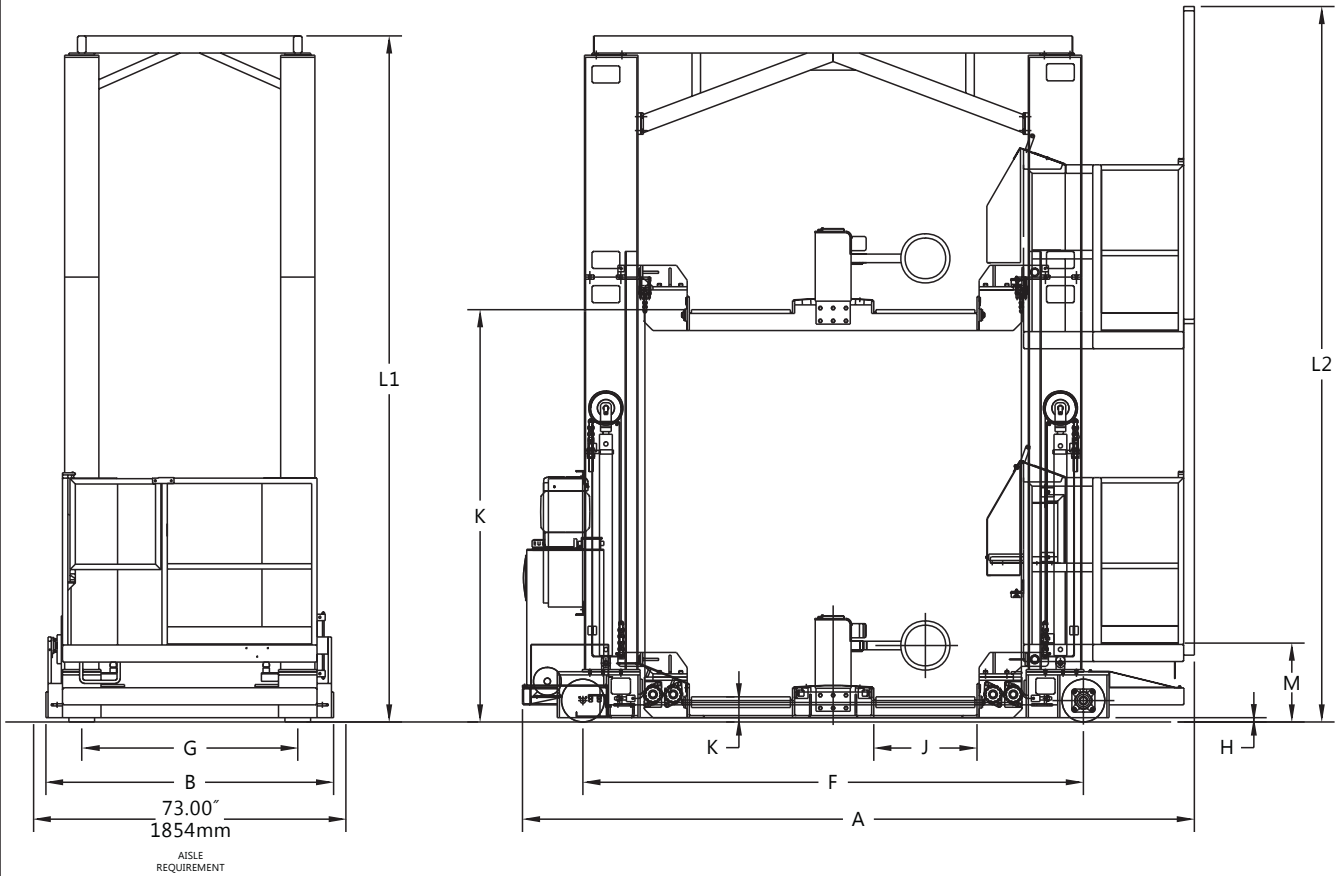


Model PCHE  
480 Volt

# PCE MULTI-STACKING POWER CHANGER SPECIFICATIONS\*

END VIEW

SIDE VIEW



**Available Options:**

- Magnet Extraction
- Stainless Steel Watering Tank and Pump Kit (Battery Filling System)
- Hydraulic Extension Arm
- Hydraulic Carriage Roller Extensions (**Note:** Restricts Lowered Height to 14"/356mm)

\* PLEASE REFERENCE THE DIMENSIONAL DATA CHART ON PAGE 3 TO MATCH THE LETTERS TO THE CORRESPONDING SPECIFICATIONS.

## General Specifications<sup>1</sup>

MODEL NO.		*PCHE-1-40		PCHE-2-24		PCHE-2-32		PCHE-2-40	
1	Drive System H.P./KW	7.5 HP	5.6KW	7.5 HP	5.6KW	7.5 HP	5.6KW	7.5 HP	5.6KW
2	Drive System / Travel Speed	0-225 FPM	0-68.8MPM	0-225 FPM	0-68.8MPM	0-225 FPM	0-68.8MPM	0-225 FPM	0-68.8MPM
3	Hydraulic System H.P./KW	15 HP	11.2KW	15 HP	11.2KW	15 HP	11.2KW	15 HP	11.2KW
4	Raise/Lower Speed	0-24 FPM	0-7.3MPM	0-24 FPM	0-7.3MPM	0-24 FPM	0-7.3MPM	0-24 FPM	0-7.3MPM
5	Machine Duty Cycle (Per Year)	5000 Hrs.		5000 Hrs.		5000 Hrs.		5000 Hrs.	
6	Input Voltage	480 VAC / 60 Hz		480 VAC / 60 Hz		480 VAC / 60 Hz		480 VAC / 60 Hz	
7	Control Voltage	24 VDC		24 VDC		24 VDC		24 VDC	
8	System AC Amp Draw / Vacuum	33.7 @ 480 VAC		33.7 @ 480 VAC		33.7 @ 480 VAC		33.7 @ 480 VAC	
9	System AC Amp Draw / Magnet	32.1@ 480 VAC		32.1@ 480 VAC		32.1@ 480 VAC		32.1@ 480 VAC	
9.a	Draw Bar Pull (10" Round Vacuum Cup)	1,000 Lbs.	454 kgs.	1,000 Lbs.	454 kgs.	1,000 Lbs.	454 kgs.	1,000 Lbs.	454 kgs.
10	Draw Bar Pull (6.75" x 13.25" Magnet)	1,400 Lbs. @ .25" plate		1,400 Lbs. @ .25" plate		1,400 Lbs. @ .25" plate		1,400 Lbs. @ .25" plate	
		635 kgs. @6mm plate		635 kgs. @6mm plate		635 kgs. @6mm plate		635 kgs. @6mm plate	
11	Power Unit Type	Electric/Hydraulic		Electric/Hydraulic		Electric/Hydraulic		Electric/Hydraulic	
12	Wheel Type / Size (Height x Width)	Poly 10" x 6"	254 x 152mm	Poly 10" x 6"	254 x 152mm	Poly 10" x 6"	254 x 152mm	Poly 10" x 6"	254 x 152mm
13	Capacity (Fully Loaded)	10,000 Lbs.	4536 kgs.	10,000 Lbs.	4536 kgs.	10,000 Lbs.	4536 kgs.	10,000 Lbs.	4536 kgs.

## Dimensional Data

MODEL NO.		*PCHE-1-40		PCHE-2-24		PCHE-2-32		PCHE-2-40	
A	Overall Length	147 5/8"	3750mm	154 5/8"	3927mm	172 5/8"	4385mm	188 5/8"	4791mm
B	Overall Width	67 1/4"	1708mm	67 1/4"	1708mm	67 1/4"	1708mm	67 1/4"	1708mm
C	Vacuum Arm Travel	48 3/8"	1229mm	48 3/8"	1229mm	48 3/8"	1229mm	48 3/8"	1229mm
D	Max. Vacuum Arm Reach (Standard Arm)	LS - 9 3/8"	238mm	LS - 9 3/8"	238mm	LS - 9 3/8"	238mm	LS - 9 3/8"	238mm
		RS - 8 3/4"	222mm	RS - 8 3/4"	222mm	RS - 8 3/4"	222mm	RS - 8 3/4"	222mm
D.1	Max. Vacuum Arm Reach with (Extension Arm)	LS - 20 3/4"	527mm	LS - 20 3/4"	527mm	LS - 20 3/4"	527mm	LS - 20 3/4"	527mm
		RS - 18"	457mm	RS - 18"	457mm	RS - 18"	457mm	RS - 18"	457mm
E	Max. Magnet Arm Reach (Standard Arm)	LS - 11 3/4"	299mm	LS - 11 3/4"	299mm	LS - 11 3/4"	299mm	LS - 11 3/4"	299mm
		RS - 10 1/2"	267mm	RS - 10 1/2"	267mm	RS - 10 1/2"	267mm	RS - 10 1/2"	267mm
E.1	Max. Magnet Arm Reach (Extension Arm)	LS - 20 5/8"	524mm	LS - 20 5/8"	524mm	LS - 20 5/8"	524mm	LS - 20 5/8"	524mm
		RS - 20"	508mm	RS - 20"	508mm	RS - 20"	508mm	RS - 20"	508mm
F	Wheel Base	140"	3556mm	117"	2972mm	133 1/4"	3365mm	151"	3835mm
G	Centerline of Drive Wheels	50 1/2"	1283mm	50 1/2"	1283mm	50 1/2"	1283mm	50 1/2"	1283mm
H	Ground Clearance	1"	25mm	1"	25mm	1"	25mm	1"	25mm
I	Grade Percent	1%		1%		1%		1%	
J	Battery Compartment Size (Each)	41 1/8"	1045mm	24 1/8"	613mm	32 1/8"	816mm	41 1/8"	1045mm
14	Max. Battery Length	44"	1118mm	44"	1118mm	44"	1118mm	44"	1118mm
15	Max. Battery Width	40"	1016mm	23"	584mm	31"	787mm	40"	1016mm
16	Max. Battery Height	32"	813mm	32"	813mm	32"	813mm	32"	813mm
17	Min. Battery Length	12"	305mm	12"	305mm	12"	305mm	12"	305mm
18	Min. Battery Width	6.5"	165mm	6.5"	165mm	6.5"	165mm	6.5"	165mm
19	Min. Battery Height <sup>2</sup>	19"	483mm	19"	483mm	19"	483mm	19"	483mm
20	Carriage Free Lift	17"	432mm	17"	432mm	17"	432mm	17"	432mm
21	Upper Guide Required? (Yes/No)	No		No		No		Yes	
22	Floor Variance (+ or - in 10 ft.)	1/4"	6mm	1/8"	3mm	1/8"	3mm	1/8"	3mm
23	Minimum Point Load	450 PSI	31.6kgf/cm <sup>2</sup>	450 PSI	31.6kgf/cm <sup>2</sup>	450 PSI	31.6kgf/cm <sup>2</sup>	450 PSI	31.6kgf/cm <sup>2</sup>

Height Dimensions		Double	Triple	Quad
K	Carriage Height (Lowered/ Raised)	6" / 55 3/8"	6" / 96 3/8"	6" / 137 3/8"
		152 / 1406mm	152 / 2448mm	152 / 3489mm
L	Overall Height L1 & L2	127 1/2" / 134 1/2"	160 3/8" / 167 3/8"	191 3/4" / 198 3/4"
		3238 / 3416mm	4073 / 4251mm	4870 / 5048mm
M	Operator Platform Height (AFF)	18" / 50 1/4"	18" / 91 1/4"	18" / 132 1/4"
		457 / 1276mm	457 / 2318mm	457 / 3359mm

Service Weight	*PCHE-1-40		PCHE-2-24		PCHE-2-32		PCHE-2-40	
Double Level	8400 lbs.	3810kgs.	8600 lbs.	3901kgs.	8900 lbs.	4037kgs.	9200 lbs.	4173kgs.
Triple Level	8700 lbs.	3946kgs.	8900 lbs.	4037kgs.	9200 lbs.	4173kgs.	9500 lbs.	4309kgs.
Quad Level	9000 lbs.	4082kgs.	9200 lbs.	4173kgs.	9500 lbs.	4309kgs.	9800 lbs.	4445kgs.

## Notes:

- Performance may vary +/- 5% due to system efficiency tolerance. The performance shown represents nominal values obtained under typical operating conditions.
- Special 220 rotary actuator available for batteries less than 19" / 483mm tall. Consult factory

\* All Specifications Subject to Change Without Notice.

## PCHE SERIES POWER CHANGER

The PCHE Series Multi-Level Power Changer™ is designed for high-capacity applications requiring 20-250 battery changes per day. The simultaneous travel and lift functions allow for fast, efficient battery changes that average less than two minutes. A 7.5-HP/5.6KW electric drive motor generates a travel speed of up to 225 fpm/69mpm on this machine. The electric drive system replaces the hydraulic drive altogether with a new Movitrac AC brake motor controller and a sealed gearbox. This super-smooth, reliable SEW Eurodrive system is the same type utilized on the PCE systems.

By separating the drive system from the lift system a lifting speed of 24 fpm/7 mpm can also be attained. This is one reason why the PCHE multi-level model is among the most efficient machines on the market today.

The 8" x 12 1/2" / 203mm x 318mm tubular uprights, unyielding frame, double-80 leveling chains, and sturdy roller carriage make the PCHE stand out above any other multi-level battery changer on the market. In high usage and high abuse applications, there is no comparison to the PCH other than MTC's own model PCE.

Safety is designed into all aspects of the multi-level Power Changer™. The standard PLC controlled battery safety lock system prevents the operator from discharging a battery off the carriage unintentionally. This unique lock out system utilizes four polarized retro-reflective photo eyes and a small PLC controller to monitor the position of the battery in the carriage. This type of system forces the operator to decide when it is safe to discharge a battery from the carriage.

Another safety feature of the multi-level Power Changer™ is the dead-man operator platform. This platform allows full access to the control panel and allows the operator complete freedom of movement during each battery change. The floor of the platform is cushioned with anti-slip padding, and handholds are provided for the operator to use during battery changes.

### Multi-Stacking Power Changer Features and Benefits

FEATURES	BENEFITS
<ol style="list-style-type: none"> <li>1. Double, Triple or Quad Levels</li> <li>2. Variable Speed Electric Drive</li> <li>3. Simultaneous Travel and Lift</li> <li>4. Powered vacuum or Magnetic Extraction</li> <li>5. PLC Controlled Battery Safety Locks</li> </ol>	<ul style="list-style-type: none"> <li>• Saves valuable facility floor space</li> <li>• Allows operator to adjust speed to meet various operating conditions</li> <li>• Greatly reduces the time required to complete a battery change</li> <li>• Provides reliable, powerful, and consistent battery attachment</li> <li>• Prevents the unintentional discharge of a battery from the carriage</li> </ul>



#### Corporate Offices & Manufacturing

PO. Box 1358  
Temple, Texas 76503 USA  
Phone (254) 298-2900 • Fax (254) 771-0287

U.S. (800) 433-3110 • Canada (855) 625-4570  
GoMTC.com/Battery